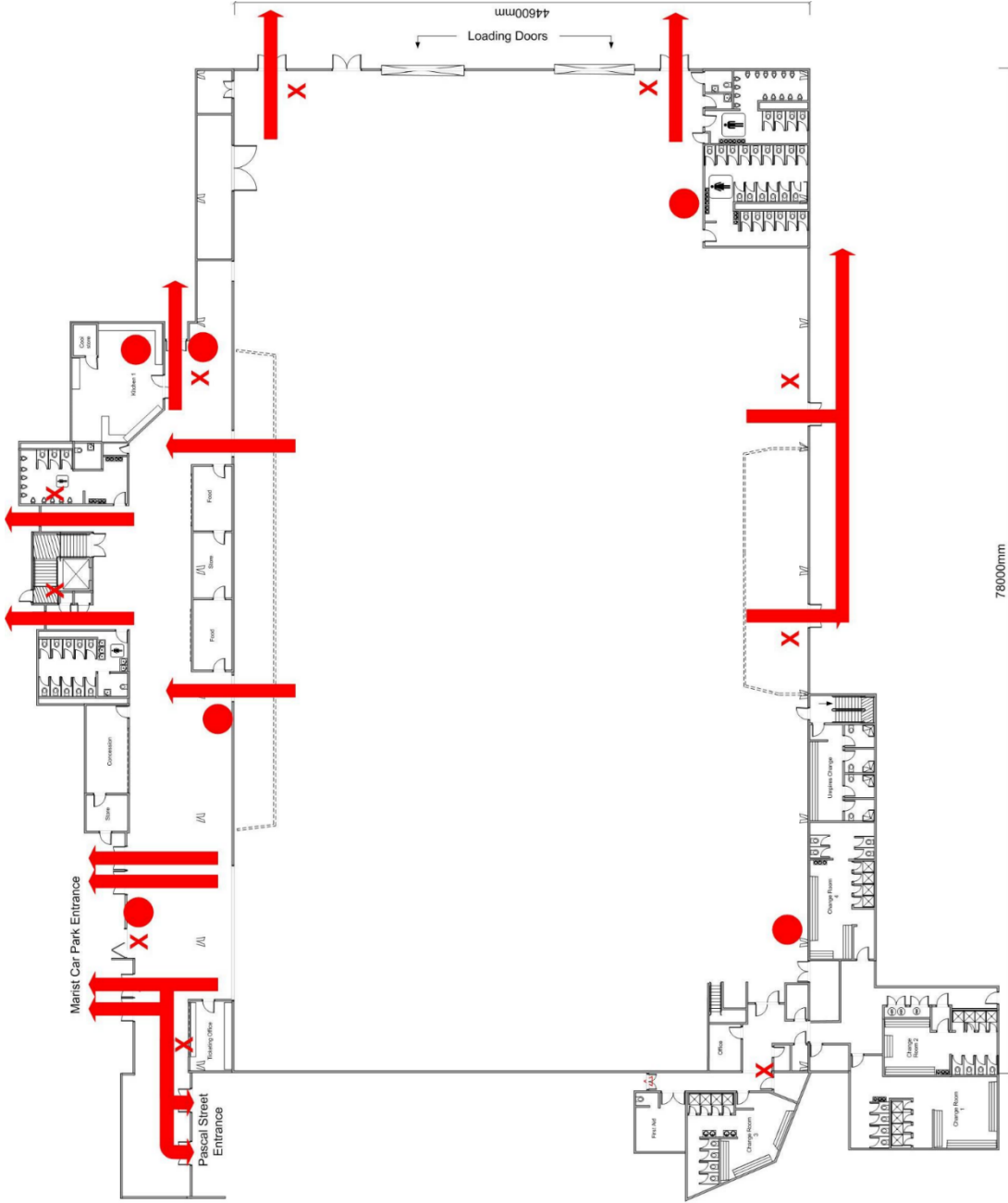




HOUSEKEEPING + SAFETY PROCEDURES – FLY PALMY ARENA

- Male and female toilets are located on both the ground floor (inside main arena and the concourse) and on the first floor of the venue in both the media and corporate lounge areas. There are independent disabled toilets on each floor as well as disabled access stalls in all the main toilets. Please do not use the change room facilities as this is a restricted area.
- Baby change facilities are located in the concourse toilets and the independent disabled toilet at the rear of the main Arena.
- Central Energy Trust Arena is a non-smoking facility. Smokers are encouraged to use the back exit door at the end of the concourse and to smoke at least 5 metres away from this door.
- A first aid kit is available, if required – this is located in the cleaners cupboard, next to the back kitchen.
- There are two defibrillators located onsite. These locations are on the external wall of Arena 4, next to the main entrance doors and the external wall of the Arena 1 Grandstand building, opposite the Artificial Turf. Both defibrillators are secured inside a lock-box which requires pincode access and must only be removed in the event of an emergency. The access code can be obtained by phoning 111 and stating the defibrillator location, which is printed on the lock-box.
- The stadium floor is a floating wooden floor, forklifts and other machinery that is permitted into the venue must be driven slow and cautiously. Please avoid sharp turns, in particular when carpet has been laid in the venue.
- The floor must not be wet at any stage as this swells the wood and causes permanent damage.
- Any power appliances and leads must have a current electrical tag displayed. Appliances or leads with an expired electrical test tag, or no test tag are not permitted to be used, as well as any leads with visible damage.
- Hi-vis vests and covered footwear must be worn during set up and dismantle of events.

- Children under the age of 14 years must be supervised at all times.
- Please make yourself aware of the positions of all the emergency exits and evacuation procedures which are on display at all exit points.
- In the event of an emergency or alarm siren, please exit through your nearest marked EXIT door and make your way quickly and calmly to your nearest assembly location.
 - If exiting from the front of the building, your nearest assembly point is the lawn area located at the front of the building.
 - If exiting from the rear of the building, your nearest assembly point is the car park at the rear of the building.
 - Venue staff will be onsite to assist in this process.
 - You must not leave the assembly location until the all clear has been provided by NZ Fire Service or venue staff.
- Any Government and Venue COVID-19 policies at the time of your event must be followed at all times.
- Should you require any assistance during your time onsite, please contact the Operations team on 027 453 5657



Evacuation Route



Call Point



Extinguisher / Hose Reel



78000mm

44600mm

Loading Doors