

Welcome All to the



2025 A North Island Qualifiers





Please ensure you have completed the following tasks

- That you have provided all the contact details for your team.
- Received your team roster, have checked and if any additions to your team are accompanied by an updated and signed SSNZ roster form – please note your added players will be INELIGIBLE to compete unless we receive an updated roster form and the players are registered on Gameday.

INTRODUCTIONS



On behalf of Auckland Basketball Services, I would like to formally welcome teams and officials to the Northern Cup tournament 2023

Tournament officials;

Rotorua Basketball

- Tournament Director – Sue Pene
- Volunteer Coordinator – Sue Pene
- Venue Controller – Buffy Soloman

Referees

- Technical Commissioner – William Ohlson
- Day 1 all referees to meet in the referees room to get ref roster (if not already posted) for the remainder of the tournament as Day 1 has gone out to schools. All referees will be required for the duration of the tournament.

VENUE AND GAME INFO



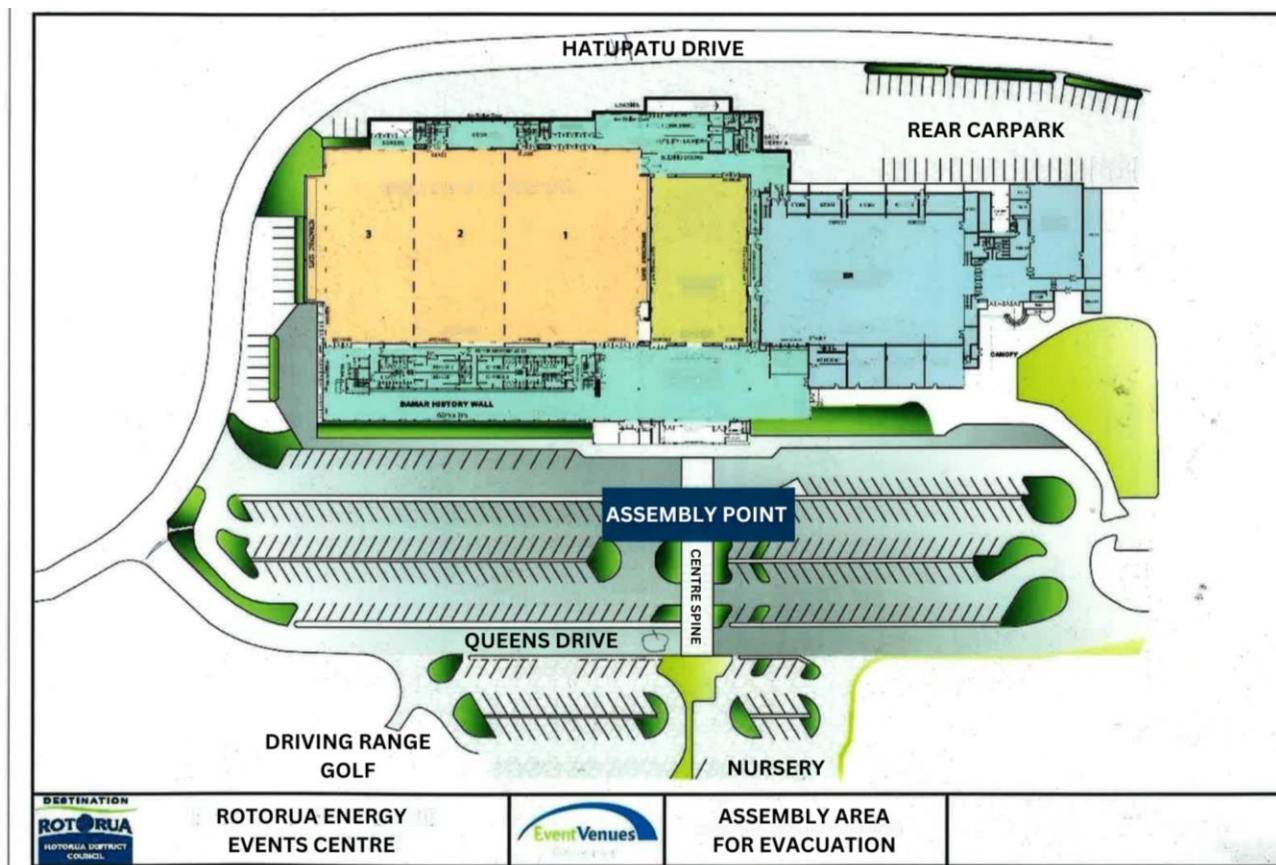
•VENUE

•Energy Events Centre, Rotorua - Venue entrances & door charge

- No door charge
- Venue open and closure times - 30mins pre and 30mins post
- Please clean up your benches before you leave.
- Parking – Free onsite parking
- Tournament office location – Unison Arena
- Placement of noticeboard for tournament info – **Tournament Office**
- Changing rooms are available as well as additional public toilets for Men and Women
- Mouthguards – **There will be mouthguards available for sale.** Please ensure your team has their own.
- Clean up your benches – **quick transitions, clean before you leave**
- Evacuation plan – **Leave the building immediately via the closest exit. everyone is to meet in the car park after evacuating, see attached map for details. Safety Wardens & Security will direct**

Emergency Procedures – Evac plan

- In case of Emergency the following assembly areas are:



FIRE ACTION

IF YOU DISCOVER A FIRE
OPERATE FIRE ALARM AND
TELEPHONE THE FIRE SERVICE IMMEDIATELY

From a safe phone: (Dial 1 for outside line) - **DIAL: 111**

WHEN WARNED OF A FIRE LEAVE THE BUILDING IMMEDIATELY
USING THE NEAREST EXIT WHICH IS:

AT ANY ILLUMINATED FIRE EXIT

YOUR ALTERNATIVE EXIT IS:

AT ANY ILLUMINATED FIRE EXIT

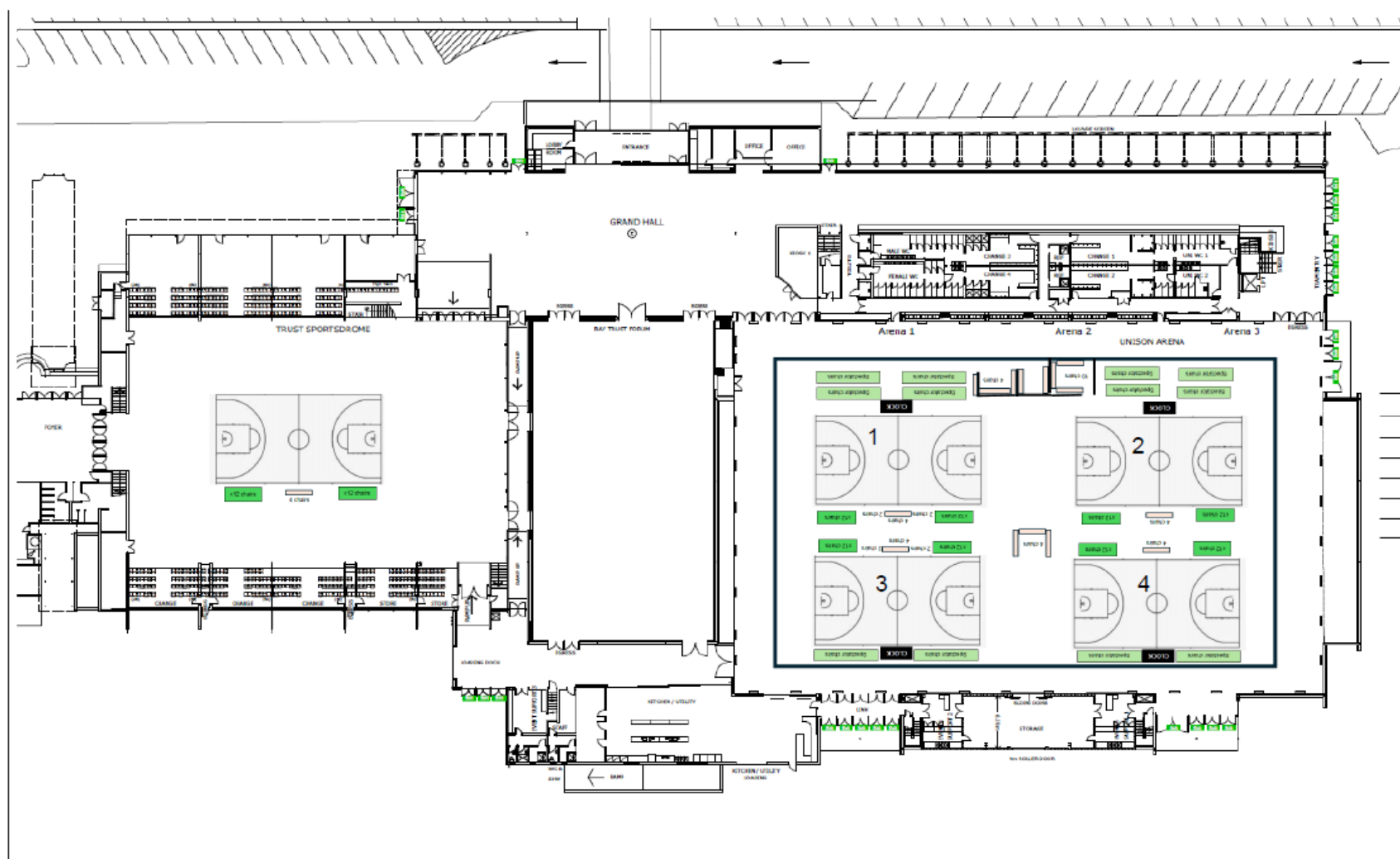
ASSEMBLE AT:

**OUTSIDE MAIN ENTRANCE DOORS
IN CARPARK WALKWAY
TO CLEARLY MARKED ASSEMBLY POINT**

STAY AT THE ASSEMBLY POINT UNTIL THE 'ALL CLEAR' IS GIVEN
WALK, DO NOT RUN, DO NOT USE LIFTS

VENUE INFO

Energy Events Centre Arena



ROTORUA
LAKES COUNCIL
Te kaunihera e nga roto o Rotorua

EVENT NAME

FILENAME

Layout master RLC 2023

MODIFIED

28 04 2023

EVENT DATE

ROOM

Disclaimer: This CAD drawing may change slightly during setup should the venue feel it necessary due to poor sight lines and regulatory requirements, however best endeavors will be made to ensure plans are adhered to. We accept no liability for changes that may be required.





MEDICAL

- **Basic first aid** – Floor Controllers & Control Centre
- **Peak Safety** – paramedic on duty 10am- 8pm each day
- **Blood kit** – Floor Controllers Table
- **Ice** – Control Centre

MEDICAL CONTACTS

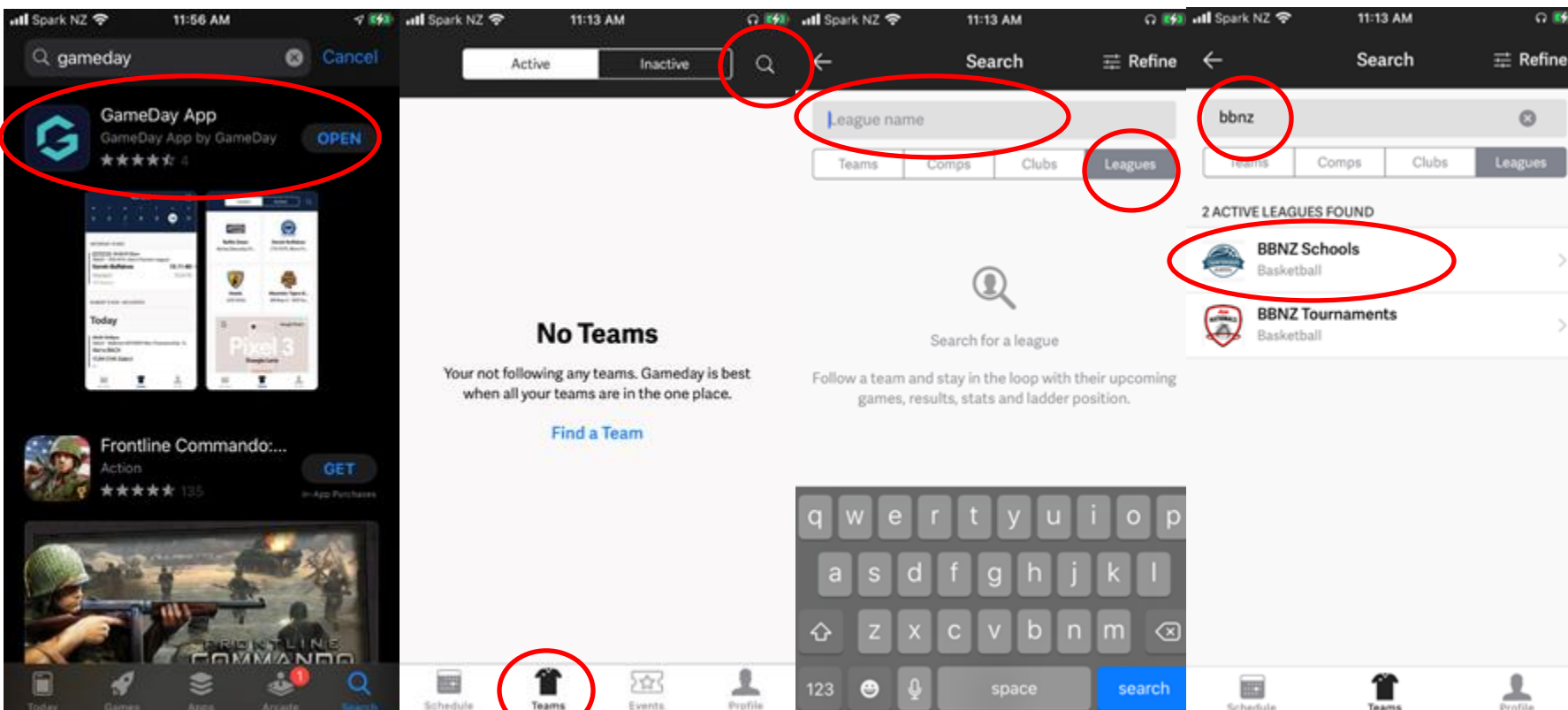
- Medical Centre: Lakes Primecare, corner Arawa & Tutanekai St
- Rotorua Hospital: Arawa St
- Dentist: Emergency Dentist Rotorua – 07 808 1490

FINDING INFORMATION



WHERE TO FIND ALL INFO

- www.nz.basketball all tourney info and link to online draw and results
- **GAMEDAY APP – ALL DRAWS / RESULTS IN REAL TIME**



COMPETITIONS INFO



•TIMES

- Warm Up - minimum of 10 minutes
- Playing Time - 4 x 10-minute stop clock quarters
- Half Time - 5 minutes
- Quarter Time Intervals - 2 minutes
- Extra Periods - 5 minutes
- Extra Period Intervals - 2 minutes

•SITTING AT THE SCOREBENCH AND IN THE EVENT OF A CLASH

- Team A MUST sit to the left - Team A is to wear their light-coloured uniforms
- Team B MUST sit to the right - Team B is to wear their dark-coloured uniforms
- Check with teams beforehand if you can!

•TEAM BENCHES

- Team management and members only – no parents!!



SCORESHEETS & BALLS

- Procedure for game balls – Referees will store and bring to games
- Procedure for scoresheets – All Scoresheets will be done on Glory League (you can check the scoresheet at anytime on the ipads), scoresheets can be available on request. Either visit tournament office or email tori@nz.basketball
- Score bench duty roster – teams be aware of your duties post match!

COMPETITIONS INFO

GLORY LEAGUE



GLORY LEAGUE & BENCH

- **Please take Scorebench duty serious**
- Adults preferable
- This is the official scoresheet!!!
- No phones or distractions
- Flyers sent out & at each scorebench
- Ask Floor controller if you need help.
- **Player and coach, supporter emails**
- Provide to us if not receiving videos.
- **Draw/ result website**
- Scoring leader widget being displayed from scorers on Glory League.

SCOREKEEPER FIBA SCORING GAME SET UP



1. Ensure that each team is assigned different team colours



Tap to change team colour

2. Tap in all active players



Tap to change status to "Playing"

3. Tap in the starting five of each team



Tap to again to change status to "starting"

Scoring a Game?

Follow These Steps



GLORY LEAGUE

- Choose Game
- Team Setup
- Team Arrows & Start
- Start Game
- Add Points
- Choose Made or Missed
- Add Foul
- Choose Foul Type
- Choose Foulster
- Foul Type
- Submit Game

1 Choose Game

Select the game then push Start >>>



2 Team Setup

All players must be listed in 'Starting 11'. Tap the player's button to set a number to identify a player's number. push Start >>>



3 Team Arrows & Start

Choose team arrows pointing in the correct direction. Push Start >>> button.

When the players take the court, Tap the Start >>> button.



5 Add Points

When the ball leaves the hands of a player, Tap the shot's position on the court.



6 Choose Made or Missed

Made Shot? Tap the shooter's number in Green.

Missed Shot? Tap the shooter's number in Red.



7 Tap to Add Foul

When the referee blows the whistle to signal a foul, Tap the Foul Button on the bottom right of the Pad.



8 Choose the Foulster

Choose the player who fouled.



9 Choose Foul Type

Tap the left 'GOOK' button. Choose the referee's foul category.



10 Submit Game

Once the game is over, tap the 'Submit' button on the top right corner of the interface.



Next Quarter

Once you reach the end of this period, hit the right arrow.



Undo

If you make a mistake, tap the undo button.

After you've Undone your Mistake, you can enter the correct event again.



CLASSIFICATION / STANDING OF TEAMS



•CLASSIFICATION OF TEAMS

- FIBA Rules will be used

•GAME POINTS

- 2 points for a win
- 1 point for loss/default (fewer than 2 players on the playing court ready to play.)
- 0 for forfeit of Game & \$500 fine (20-0 scoreline)

•CLASSIFICATIONS

- 2 way tie – head to head result between the teams
- 3 or more way tie – head to head result between the team tied, if they have the same win/loss then points difference will be used – points for minus points against (ONLY IN GAMES BETWEEN THE TIED TEAMS)
- Further criteria is applied after that.

REFEREE INFORMATION



- **Technical Commissioner**

- **William Ohlson**

- **Impartiality of referees**

- All referees are considered impartial. In some instances we have had to have referees officiate their own teams.

- **Mouthguards**

- This is the responsibility of team management wear. If there are any issues with this, the referees will speak to the player and if they persist management for support. As a very last option the player may be subbed for a play phase.

- **Uniforms**

- In the event of a clash – team A will need to wear a light strip. However, we ask that both teams work together to ensure we do not have to resort to this rule. A clash is only similar colours not two dark or light shades
 - Undergarments – no t-shirts or long sleeve tops. Compression tops or pants may be worn but they must be of the same dominant colour for the team.

- **Behaviour**

- Coach, Player and Supporter behaviour. As per the BBNZ Code of Conduct, poor behaviour will not be tolerated. A reminder that we all have an onus to present the best possible image of our sport.



Referee info continued

•Team management roles – The technical rules are

- The Head Coach is the only team manager who can by rule speak to the referee. In doing so this is to ask a question in a dead ball situation.
- The Assistant Coach may only stand if the Head Coach is sitting and can only speak to their players (not the referees).
- Team management can approach the score table in a dead ball situation if any questions. However, if there is a concern, the Head Coach needs to raise this with the referees (in a polite manner in a dead ball opportunity). Please ensure that you raise concerns asap, as some errors are only correctable in a limited time period.
- Score bench – Manager or coaching staff can only approach the score bench in a dead ball situation. If there are issues with scores / fouls etc, please alert the referee asap.

•Game Protests

- BBNZ regulations as at Sept will be followed
- Any complaints can be made directly or forwarded via ABS to the Judicial Officer – Melony O'Connor

BEHAVIOUR



- Floor controller (FC) or nominated person (NP) observes behaviour either after complaint is made or in passing.
- If the behaviour is deemed inappropriate, the FC or NP has a quiet word with the offender – either during or post-match.
- If the behaviour continues or the offender responds poorly after the quiet word, the FC or NP gives offender a final chance to calm down.
- If the behaviour persists, the offender is asked by the FC or NP to leave the premises for the day.
- If the offender returns within the period of exclusion or continues bad behaviour after the being asked to leave the premises, they are to be removed by security or police and trespassed.
- The team management of the offender will be notified of the incident and will be asked to speak with the offender. This could happen at any point through this process.
- An incident report must be lodged by the FC or NP. The incident report must be send to the offenders Association/School and BBNZ for future reference. Where a written trespass notice is given, an incident report is not required.

**BE A GREAT
SUPPORTER**

Let them play

These are KIDS

This is a GAME

Coaches are
VOLUNTEERS

Refs are HUMAN

THIS IS NOT
THE NBA



#LetThemPlay @BasketballNZ www.nz.basketball

ANY QUESTIONS??

**FROM AUCKLAND
BASKETBALL SERVICES &
BASKETBALL NEW ZEALAND
GOOD LUCK TO ALL TEAMS!**

